

RIPPER & BLADE REST PADS

Protection to floor and machinery is made easy and effortless with the use of our lightweight and durable pads.

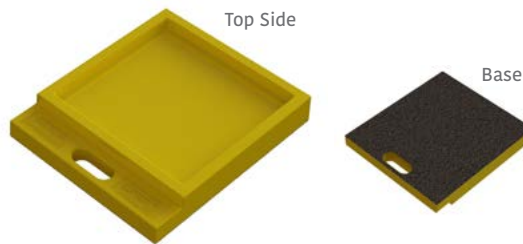
- » **PROTECT FLOOR & MACHINERY AGAINST WEAR & IMPACT**
- » **LIGHTWEIGHT DESIGN**
- » **HIGH TRACTION BASE**



RIPPER PAD MEDIUM

PART NO. NPR00370-00
Recommended to be used with the ripper boot removed.

30,000kg/100cm²

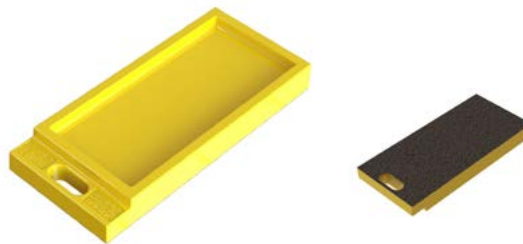


465mm L
400mm W
40mm D
 10.5kg

RIPPER PAD LARGE

PART NO. NPR01415-00
Can be used with large size rippers.

30,000kg/100cm²



675mm L
300mm W
50mm D
 13kg

BLADE REST PAD NARROW

PART NO. NPR0870-00
To be used in sets between blade and floor.

30,000kg/100cm²



600mm L
200mm W
50mm D
 7kg

BLADE REST PAD WIDE

PART NO. NPR01416-00
To be used in sets between blade and floor.

30,000kg/100cm²



600mm L
400mm W
50mm D
 14kg